

# Н, Р

## Технические характеристики

### По вопросам продаж и поддержки обращайтесь:

Алматы (7273)495-231	Калининград (4012)72-03-81	Омск (3812)21-46-40	Сыктывкар (8212)25-95-17
Ангарск (3955)60-70-56	Калуга (4842)92-23-67	Орел (4862)44-53-42	Тамбов (4752)50-40-97
Архангельск (8182)63-90-72	Кемерово (3842)65-04-62	Оренбург (3532)37-68-04	Тверь (4822)63-31-35
Астрахань (8512)99-46-04	Киров (8332)68-02-04	Пенза (8412)22-31-16	Тольятти (8482)63-91-07
Барнаул (3852)73-04-60	Коломна (4966)23-41-49	Петрозаводск (8142)55-98-37	Томск (3822)98-41-53
Белгород (4722)40-23-64	Кострома (4942)77-07-48	Псков (8112)59-10-37	Тула (4872)33-79-87
Благовещенск (4162)22-76-07	Краснодар (861)203-40-90	Пермь (342)205-81-47	Тюмень (3452)66-21-18
Брянск (4832)59-03-52	Красноярск (391)204-63-61	Ростов-на-Дону (863)308-18-15	Ульяновск (8422)24-23-59
Владивосток (423)249-28-31	Курск (4712)77-13-04	Рязань (4912)46-61-64	Улан-Удэ (3012)59-97-51
Владикавказ (8672)28-90-48	Курган (3522)50-90-47	Самара (846)206-03-16	Уфа (347)229-48-12
Владимир (4922)49-43-18	Липецк (4742)52-20-81	Саранск (8342)22-96-24	Хабаровск (4212)92-98-04
Волгоград (844)278-03-48	Магнитогорск (3519)55-03-13	Санкт-Петербург (812)309-46-40	Чебоксары (8352)28-53-07
Вологда (8172)26-41-59	Москва (495)268-04-70	Саратов (845)249-38-78	Челябинск (351)202-03-61
Воронеж (473)204-51-73	Мурманск (8152)59-64-93	Севастополь (8692)22-31-93	Череповец (8202)49-02-64
Екатеринбург (343)384-55-89	Набережные Челны (8552)20-53-41	Симферополь (3652)67-13-56	Чита (3022)38-34-83
Иваново (4932)77-34-06	Нижний Новгород (831)429-08-12	Смоленск (4812)29-41-54	Якутск (4112)23-90-97
Ижевск (3412)26-03-58	Новокузнецк (3843)20-46-81	Сочи (862)225-72-31	Ярославль (4852)69-52-93
Иркутск (395)279-98-46	Ноябрьск (3496)41-32-12	Ставрополь (8652)20-65-13	
Казань (843)206-01-48	Новосибирск (383)227-86-73	Сургут (3462)77-98-35	
Россия +7(495)268-04-70	Киргизия +996(312)-96-26-47	Казахстан +7(7172)727-132	

## Dead Weight Testers

Hydraulic

H3000

Bench-top / Table-top Model

Ideal for Fine Increments & for Medium Volume Calibration. Ensures – Easy & Controllable Pressure generation for Calibrating Pressure Gauges / Transducers / Transmitters, Transfer Standards, Recorders, Digital Calibrators etc.

Screw Pump with built-in Priming Pump

### SALIENT FEATURES

Engineering Units : bar or Kg/Cm<sup>2</sup> or psi (Kpa & Mpa also available)  
Adjustable Foot & Spirit Level  
Piston Calibrated thro' "Cross Floating Techniques"  
Calibrated to Standard Gravity  
(Optional : Calibration to Local Gravity as per Customer's requirement)  
Accuracies Traceable to International Standards  
Mild Steel or Non-Magnetic Stainless Steel Weight Sets  
Motorized Model – Optional



\* Typical Photo.  
Accessories shown above are not part of standard equipment

### SPECIFICATIONS

Ranges	35 / 70 / 100 / 160 / 350 / 600 / 700 bar	
Piston	Single / Dual	} Refer Table 2
Standard Accuracy	±0.1% of Reading	
Traceability	International Standards	} Refer Table 1
Weights	Mild Steel or Non-Magnetic Stainless Steel	
Pressure generation	Thro' Priming Pump & Screw Ram	
Standard Corrections	Gravity : 9.80665 m/s <sup>2</sup> * / Temperature : 23°C / Air Density : 1.2 Kg/Cm <sup>3</sup>	
Weight (approx.)	Instrument : 19 Kg. ; Weight Sets : 8 to 33 Kg.	Refer Table 2
No. of Weights	12 to 15	
Instrument Dimensions	530 x 390 x 230 mm (L x W x H)	
Operating Fluid	Oil	

Table 1

Model	Accuracy	PCU	Weight Set	Certification	Remarks
H3000	±0.1% of Reading	Tungsten Carbide Piston & Matching Cylinder	Mild Steel or Non- Magnetic Stainless Steel	Overall Accuracy	Traceable Calibration Certificate

Table 2

Piston Type	Piston Model	Pressure Ranges		
		1 / bar	2 / Kg/Cm <sup>2</sup>	3 / psi
Single	SP-35	0.5 to 35	0.5 to 35	10 to 500
Single	SP-70	0.5 to 70	0.5 to 70	10 to 1000
Single	SP-100	5 to 100	5 to 100	75 to 1500
Single	SP-160	5 to 160	5 to 160	75 to 2500
Single	SP-350	5 to 350	5 to 350	75 to 5000
Single	SP-600	10 to 600	10 to 600	150 to 9000
Single	SP-700	10 to 700	10 to 700	150 to 10000
Dual	DP-160	1 to 160	1 to 160	15 to 2500
Dual	DP-350	1 to 350	1 to 350	15 to 5000
Dual	DP-600	1 to 600	1 to 600	15 to 9000
Dual	DP-700	1 to 700	1 to 700	15 to 10000

#### **STANDARD INCLUSIONS**

- Basic Instrument
- Calibrated M.S. or S.S Weight Sets - Refer Table 1 & 2
- Operating Fluid (500 ml)
- 'O' Ring & Seals
- Dust Cover, Wooden Carrying Case (for Weight Sets)
- Traceable Calibration Certificate
- Instruction Manual

#### **OPTIONAL (ADD-ON) ITEMS**

- Full set of Adaptors consisting of 1/8", 1/4", 3/8", 1/2" BSP (*Set of NPT Adaptors available on request*)
- Right angled Adaptor
- Two Gauge Adaptor
- Conversion Weight Sets to convert from one unit of Pressure to another
- Incremental Weight Sets for smaller increments of Pressure
- Pointer Puller / Punch
- Set of Spanners & Screw Driver
- Motorized Version
- Calibration Certificates are issued in Accordance with our Scope as granted by NABL per ISO/IEC 17025:2017 Standards - Refer Table 1

## Technical Datasheet

### Dead Weight Testers

Hydraulic

H6000

Bench-top / Table-top Model

Ideal for Fine Increments & for Medium Volume Calibration. Ensures – Easy & Controllable Pressure generation for Calibrating Pressure Gauges / Transducers / Transmitters, Transfer Standards, Recorders, Digital Calibrators etc.

Screw Pump with built-in Priming Pump

#### SALIENT FEATURES

Engineering Units : bar or Kg/Cm <sup>2</sup> or psi (Kpa & Mpa also available)
Adjustable Foot & Spirit Level
Piston Calibrated thro' "Cross Floating Techniques"
Calibrated to Standard Gravity
(Optional : Calibration to Local Gravity as per Customer's requirement)
Accuracies Traceable to International Standards
Non-Magnetic Stainless Steel Weight Sets
Motorized Model – Optional



\* Typical Photo. Accessories shown above are not part of standard equipment

#### SPECIFICATIONS

Ranges	35 / 70 / 100 / 160 / 350 / 600 / 700 bar	
Piston	Single / Dual	} Refer Table 2
Standard Accuracy	±0.05% of Reading	
Traceability	International Standards	} Refer Table 1
Weights	Non-Magnetic Stainless Steel	
Pressure generation	Thro' Priming Pump & Screw Ram	
Standard Corrections	Gravity : 9.80665 m/s <sup>2</sup> * / Temperature : 23°C / Air Density : 1.2 Kg/Cm <sup>2</sup>	
Weight (approx.)	Instrument : 19 Kg. ; Weight Sets : 8 to 33 Kg.	Refer Table 2
No. of Weights	12 to 15	
Instrument Dimensions	530 x 390 x 230 mm (L x W x H)	
Operating Fluid	Oil	
DWTCal Software	Optional	

Table 1

Model	Accuracy	PCU	Weight Set	Certification	Remarks
H6000	±0.05% of Reading	Tungsten Carbide Piston & Matching Cylinder	Non-Magnetic Stainless Steel	Overall Accuracy	Traceable Calibration Certificate

Table 2

Piston Type	Piston Model	Pressure Ranges		
		1 / Bar	2 / Kg/Cm <sup>2</sup>	3 / PSI
Single	SP-35	0.5 to 35	0.5 to 35	10 to 500
Single	SP-70	0.5 to 70	0.5 to 70	10 to 1000
Single	SP-100	5 to 100	5 to 100	75 to 1500
Single	SP-160	5 to 160	5 to 160	75 to 2500
Single	SP-350	5 to 350	5 to 350	75 to 5000
Single	SP-600	10 to 600	10 to 600	150 to 9000
Single	SP-700	10 to 700	10 to 700	150 to 10000
Dual	DP-160	1 to 160	1 to 160	15 to 2500
Dual	DP-350	1 to 350	1 to 350	15 to 5000
Dual	DP-600	1 to 600	1 to 600	15 to 9000
Dual	DP-700	1 to 700	1 to 700	15 to 10000

#### STANDARD INCLUSIONS

- Basic Instrument
- Calibrated S.S Weight Sets - Refer Table 1 & 2
- Full set of Adaptors consisting of 1/8", 1/4", 3/8", 1/2" BSP (Set of NPT Adaptors available on request)
- Operating Fluid (500 ml)
- Spirit Level, Pointer Puller / Punch
- Set of Spanners & Screw Driver
- 'O' Ring & Seals
- Dust Cover, Wooden Carrying Case (for Weight Sets)
- Traceable Calibration Certificate
- Instruction Manual

P.T.O.

#### **OPTIONAL (ADD-ON) ITEMS**

- Right angled Adaptor
- Two Gauge Adaptor
- Conversion Weight Sets to convert from one unit of Pressure to another
- Incremental Weight Sets for smaller increments of Pressure
- DWTCal Calibration Software
- Motorized Version
- Calibration Certificates are issued in Accordance with our Scope as granted by NABL per ISO/IEC 17025:2017 Standards - Refer Table 1

# Precision Dead Weight Testers

Hydraulic

H6600

Bench-top / Table-top Model

Ideal for Fine Increments & for Medium Volume Calibration. Ensures – Easy & Controllable Pressure generation for Calibrating Pressure Gauges / Transducers / Transmitters, Transfer Standards, Recorders, Digital Calibrators etc.

Screw Pump with built-in Priming Pump

## SALIENT FEATURES

Engineering Units : bar or Kg/Cm<sup>2</sup> or psi (Kpa & Mpa also available)  
Adjustable Foot & Spirit Level  
Piston Calibrated thro' "Cross Floating Techniques"  
Calibrated to Standard Gravity  
(Optional : Calibration to Local Gravity as per Customer's requirement)  
Accuracies Traceable to International Standards  
Non-Magnetic Stainless Steel Weight Sets  
Calibration Certificate – for overall Accuracy + PCU (Area) + Weights (Mass) from NABL Accredited Lab – as per ISO/IEC 17025:2015  
DWTcal Calibration Software - optional  
Motorized Model – Optional



\* Typical Photo. Accessories shown above are not part of standard equipment

## SPECIFICATIONS

Ranges	35 / 70 / 100 / 160 / 350 / 600 / 700 bar	
Piston	Single / Dual	Refer Table 2
Standard Accuracy	±0.025% of Reading	
Traceability	International Standards	Refer Table 1
Weights	Non-Magnetic Stainless Steel	
Pressure generation	Thro' Priming Pump & Screw Ram	
Standard Corrections	Gravity : 9.80665 m/s <sup>2</sup> / Temperature : 23°C / Air Density : 1.2 Kg/Cm <sup>2</sup>	
Weight (approx.)	Instrument : 19 Kg. ; Weight Sets : 8 to 33 Kg.	Refer Table 2
No. of Weights	12 to 15	
Instrument Dimensions	530 x 390 x 230 mm (L x W x H)	
Operating Fluid	Oil	

Table 1

Model	Accuracy	PCU	Weight Set	Certification	Remarks
H6600	±0.025% of Reading	Tungsten Carbide Piston & Matching Cylinder	Non-Magnetic Stainless Steel	Overall Accuracy + PCU (Area) + Weights (Mass)	Issued by NABL ISO/IEC 17025:2017 Accredited Lab

Table 2

Piston Type	Piston Model	Pressure Ranges		
		1 / bar	2 / Kg/Cm <sup>2</sup>	3 / psi
Single	SP-35	0.5 to 35	0.5 to 35	10 to 500
Single	SP-70	0.5 to 70	0.5 to 70	10 to 1000
Single	SP-100	5 to 100	5 to 100	75 to 1500
Single	SP-160	5 to 160	5 to 160	75 to 2500
Single	SP-350	5 to 350	5 to 350	75 to 5000
Single	SP-600	10 to 600	10 to 600	150 to 9000
Single	SP-700	10 to 700	10 to 700	150 to 10000
Dual	DP-160	1 to 160	1 to 160	15 to 2500
Dual	DP-350	1 to 350	1 to 350	15 to 5000
Dual	DP-600	1 to 600	1 to 600	15 to 9000
Dual	DP-700	1 to 700	1 to 700	15 to 10000

#### **STANDARD INCLUSIONS**

- Basic Instrument
- Full set of Adaptors consisting of 1/8", 1/4", 3/8", 1/2" BSP (Set of NPT Adaptors available on request)
- Calibrated S.S Weight Sets - Refer Table 1 & 2
- Spirit Level, Pointer Puller / Punch
- Set of Spanners & Screw Driver
- Operating Fluid (500 ml)
- 'O' Ring & Seals
- Dust Cover, Wooden Carrying Case (for Weight Sets)
- Calibration Certificates are issued in Accordance with our Scope as granted by NABL per ISO/IEC 17025:2017 Standards - Refer Table 1
- Instruction Manual

#### **OPTIONAL (ADD-ON) ITEMS**

- Right angled Adaptor
- Two Gauge Adaptor
- Conversion Weight Sets to convert from one unit of Pressure to another
- Incremental Weight Sets for smaller increments of Pressure
- DWTCal Calibration Software
- Motorized Version

## Technical Datasheet

# High Precision Dead Weight Testers

Hydraulic

H6900

Bench-top / Table-top Model

Ideal for Fine Increments & for Medium Volume Calibration. Ensures – Easy & Controllable Pressure generation for Calibrating Pressure Gauges / Transducers / Transmitters, Transfer Standards, Recorders, Digital Calibrators etc.

Screw Pump with built-in Priming Pump

### SALIENT FEATURES

Engineering Units : bar / Kg/Cm<sup>2</sup> / psi (Kpa & Mpa also available)  
Adjustable Foot & Spirit Level  
Piston Calibrated thro' "Cross Floating Techniques"  
Calibrated to Standard Gravity  
(Optional : Calibration to Local Gravity as per Customer's requirement)  
Accuracies Traceable to International Standards  
Non-Magnetic Stainless Steel Weight Sets  
Calibration Certificate – for overall Accuracy + PCU (Area) + Weights (Mass) from NABL Accredited Lab – as per ISO/IEC 17025:2015  
DWTCal Calibration Software  
Motorized Model – Optional



\* Typical Photo. Accessories shown above are not part of standard equipment

### SPECIFICATIONS

Ranges	35 / 70 / 100 / 160 / 350 / 600 / 700 bar	
Piston	Single / Dual	} Refer Table 2
Standard Accuracy	±0.015% of Reading	
Traceability	International Standards	} Refer Table 1
Weights	Non-Magnetic Stainless Steel	
Pressure generation	Thro' Priming Pump & Screw Ram	
Standard Corrections	Gravity : 9.80665 m/s <sup>2</sup> * / Temperature : 23°C / Air Density : 1.2 Kg/Cm <sup>2</sup>	
Weight (approx.)	Instrument : 19 Kg. ; Weight Sets : 8 to 33 Kg.	Refer Table 2
No. of Weights	12 to 15	
Instrument Dimensions	530 x 390 x 230 mm (L x W x H)	
Operating Fluid	Oil	

Table 1

Model	Accuracy	PCU	Weight Set	Certification	Remarks
H6900	±0.015% of Reading	Tungsten Carbide Piston & Matching Hardened Cylinder	Non-Magnetic Stainless Steel	Overall Accuracy + PCU (Area) + Weights (Mass)	Issued by NABL ISO/IEC 17025:2017 Accredited Calibration Lab

Table 2

Piston Type	Piston Model	Pressure Ranges		
		1 / bar	2 / Kg/Cm <sup>2</sup>	3 / psi
Single	SP-35	0.5 to 35	0.5 to 35	10 to 500
Single	SP-70	0.5 to 70	0.5 to 70	10 to 1000
Single	SP-100	5 to 100	5 to 100	75 to 1500
Single	SP-160	5 to 160	5 to 160	75 to 2500
Single	SP-350	5 to 350	5 to 350	75 to 5000
Single	SP-600	10 to 600	10 to 600	150 to 9000
Single	SP-700	10 to 700	10 to 700	150 to 10000
Dual	DP-160	1 to 160	1 to 160	15 to 2500
Dual	DP-350	1 to 350	1 to 350	15 to 5000
Dual	DP-600	1 to 600	1 to 600	15 to 9000
Dual	DP-700	1 to 700	1 to 700	15 to 10000

P.T.O.



### STANDARD INCLUSIONS

- Basic Instrument
- Full set of Adaptors consisting of 1/8", 1/4", 3/8", 1/2" BSP (*Set of NPT Adaptors available on request*)
- Calibrated S.S Weight Sets - Refer Table 1 & 2
- Spirit Level, Pointer Puller / Punch
- Set of Spanners & Screw Driver
- Operating Fluid (500 ml)
- 'O' Ring & Seals
- Dust Cover, Wooden Carrying Case (for Weight Sets)
- DWTCal Calibration Software
- Calibration Certificates are issued in Accordance with our Scope as granted by NABL per ISO/IEC 17025:2017 Standards - Refer Table 1
- Instruction Manual

### OPTIONAL (ADD-ON) ITEMS

- Right angled Adaptor
- Two Gauge Adaptor
- Conversion Weight Sets to convert from one unit of Pressure to another
- Incremental Weight Sets for smaller increments of Pressure
- Motorized Version

## Dead Weight Tester Software

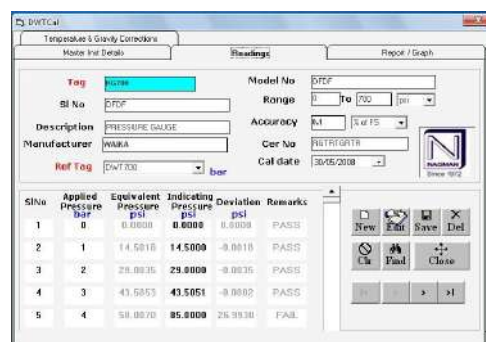
## DWTCal

*Pressure Calculation, Correction & Certificate Generation Software for Precision Dead Weight Testers*

*Flexible Working Tool for Easier, Quicker & More Accurate Calibration*

### SALIENT FEATURES

Menu Driven, easy to use software  
Maintain Multiple Dead Weight Tester files  
5 Pressure Units  
Pre-loaded Calibration Data  
Automatic generation of Calibration Certificates  
Pressure Equivalent calculations with all corrections applied  
Allows users to apply all necessary corrections  
(*Local Gravity, Pressure Head, Temperature etc.*)  
to enhance the performance / Accuracy of the Dead Weight Tester  
Calibration details are stored and/or automatically inserted into a  
Calibration Certificate  
Windows XP or higher OS Compatible



## High Precision Dead Weight Testers

Hydraulic

H6900N

Bench-top / Table-top Model

*Ideal for Fine Increments & for Medium Volume Calibration. Ensures – Easy & Controllable Pressure generation for Calibrating Pressure Gauges / Transducers / Transmitters, Transfer Standards, Recorders, Digital Calibrators etc.*

Screw Pump with built-in Priming Pump

### SALIENT FEATURES

Engineering Units : bar / Kg/Cm <sup>2</sup> / psi (Kpa & Mpa also available)
Adjustable Foot & Spirit Level
Piston Calibrated thro' "Cross Floating Techniques"
Calibrated to Standard Gravity (Optional : Calibration to Local Gravity as per Customer's requirement)
Accuracies Traceable to International Standards
Non-Magnetic Stainless Steel Weight Sets
Calibration Certificate – for overall Accuracy + PCU (Area) + Weights (Mass) from NABL Accredited Lab – as per ISO/IEC 17025:2017
DWTCal Software



*Typical Photo. Original Product may vary.  
Gauge/Indicator not included in Basic Instrument*

### SPECIFICATIONS

Ranges	1000 / 1200 bar	
Piston	Single / Dual	} Refer Table 2
Standard Accuracy	±0.015% / ±0.01% of Reading	
Traceability	International Standards	} Refer Table 1
Weights	Non-Magnetic Stainless Steel	
Pressure generation	Thro' Priming Pump & Screw Ram	
Standard Corrections	Gravity : 9.80665 m/s <sup>2</sup> / Temperature : 23°C / Air Density : 1.2 Kg/Cm <sup>2</sup>	
Weight (approx.)	Instrument : 19 Kg. ; Weight Sets : 8 to 33 Kg.	Refer Table 2
No. of Weights	12 to 15	
Instrument Dimensions	600 x 500 x 360 mm (L x W x H)	
Operating Fluid	Oil	

**Table 1**

Model	Accuracy	PCU	Weight Set	Certification	Remarks
H6900N	±0.015% of Reading	Tungsten Carbide Piston & Matching Cylinder	Non-Magnetic Stainless Steel	Overall Accuracy + PCU + Weights (Mass)	From ISO/IEC 17025:2017 NABL Accredited Calibration Lab
H6990N	±0.01% of Reading				

**Table 2**

Piston Type	Piston Model	Pressure Ranges		
		1 / bar	2 / Kg/Cm <sup>2</sup>	3 / psi
Single	SP-1000	10 to 1000	10 to 1000	150 to 15000
Single	SP-1200	10 to 1200	10 to 1200	150 to 18000
Dual	DP-1000	1 to 1000	1 to 1000	15 to 15000
Dual	DP-1200	1 to 1200	1 to 1200	15 to 18000

**STANDARD INCLUSIONS**

- Basic Instrument
- Calibrated Stainless Steel Weight Sets Refer Table 1 & 2
- Full set of Adaptors consisting of 1/8", 1/4", 3/8", 1/2" BSP (*Set of NPT Adaptors available on request*)
- Operating Fluid (500 ml)
- Spirit Level, Pointer Puller / Punch
- Set of Spanners & Screw Driver
- 'O' Ring & Seals
- Wooden Carrying Case (for Weight Sets)
- Instruction Manual
- DWTCal Calibration Software
- Calibration Certificates are issued in Accordance with our Scope as granted by NABL per ISO/IEC 17025:2017 Standards - Refer Table 1

**OPTIONAL (ADD-ON) ITEMS**

- Right angled Adaptor
- Two Gauge Adaptor
- Conversion Weight Sets to convert from one unit of Pressure to another
- Incremental Weight Sets for smaller increments of Pressure

-----

**Dead Weight Tester Software**

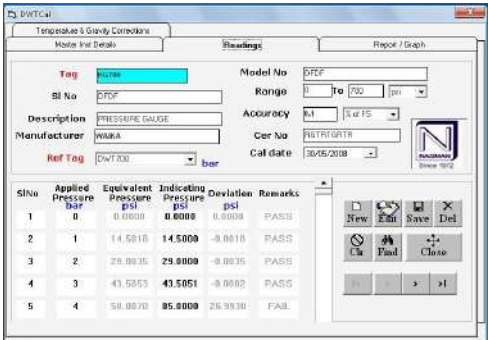
**DWTCal**

*Pressure Calculation, Correction & Certificate Generation Software for Precision Dead Weight Testers*

*Flexible Working Tool for Easier, Quicker & More Accurate Calibration*

**SALIENT FEATURES**

- Menu Driven, easy to use software
- Maintain Multiple Dead Weight Tester files
- 5 Pressure Units
- Pre-loaded Calibration Data
- Automatic generation of Calibration Certificates
- Pressure Equivalent calculations with all corrections applied
- Allows users to apply all necessary corrections  
(*Local Gravity, Pressure Head, Temperature etc.*)
- to enhance the performance / Accuracy of the Dead Weight Tester
- Calibration details are stored and/or automatically inserted into a Calibration Certificate
- Windows XP or higher OS Compatible



## Technical Datasheet

### Weight Testers

Hydraulic

H3000-P

Portable

Ideal for Fine Increments & for Medium Volume Calibration. Ensures – Easy & Controllable Pressure generation for Calibrating Pressure Gauges / Transducers / Transmitters, Transfer Standards, Recorders, Digital Calibrators etc.

Screw Pump with built-in Priming Pump

Typical Photo.  
Accessories shown are not  
part of standard equipment



#### SALIENT FEATURES

Engineering Units : bar or Kg/Cm<sup>2</sup> or psi (Kpa & Mpa also available)  
Spirit Level  
Piston Calibrated thro' "Cross Floating Techniques"  
Calibrated to Standard Gravity  
(Optional : Calibration to Local Gravity as per Customer's requirement)  
Accuracies Traceable to International Standards  
Mild Steel or Non-Magnetic Stainless Steel Weight Sets  
Fixed in a Sturdy Mobile Case for use in Field Calibration

#### SPECIFICATIONS

Ranges	35 / 70 / 100 / 160 / 350 / 600 / 700 bar	
Piston	Single / Dual	} Refer Table 2
Standard Accuracy	±0.1% of Reading	
Traceability	International Standards	} Refer Table 1
Weights	Mild Steel or Non-Magnetic Stainless Steel	
Pressure generation	Thro' Priming Pump & Screw Ram	
Standard Corrections	Gravity : 9.80665 m/s <sup>2</sup> * / Temperature : 23°C / Air Density : 1.2 Kg/Cm <sup>2</sup>	
Weight (approx.)	Instrument : 12 Kg. ; Weight Sets : 8 to 33 Kg.	Refer Table 2
No. of Weights	12 to 15	
Instrument Dimensions	440 x 350 x 200 mm (L x B x H)	
Operating Fluid	Oil	

Table 1

Model	Accuracy	PCU	Weight Set	Certification	Remarks
H3000-P	±0.1% of Reading	Tungsten Carbide Piston & Matching Cylinder	Mild Steel or Non-Magnetic Stainless Steel	Overall Accuracy	Traceable Calibration Certificate

Table 2

Piston Type	Piston Model	Pressure Ranges		
		1 / bar	2 / Kg/Cm <sup>2</sup>	3 / psi
Single	SP-35	0.5 to 35	0.5 to 35	10 to 500
Single	SP-70	0.5 to 70	0.5 to 70	10 to 1000
Single	SP-100	5 to 100	5 to 100	75 to 1500
Single	SP-160	5 to 160	5 to 160	75 to 2500
Single	SP-350	5 to 350	5 to 350	75 to 5000
Single	SP-600	10 to 600	10 to 600	150 to 9000
Single	SP-700	10 to 700	10 to 700	150 to 10000
Dual	DP-160	1 to 160	1 to 160	15 to 2500
Dual	DP-350	1 to 350	1 to 350	15 to 5000
Dual	DP-600	1 to 600	1 to 600	15 to 9000
Dual	DP-700	1 to 700	1 to 700	15 to 10000

P.T.O.

#### **STANDARD INCLUSIONS**

- Basic Instrument in a sturdy mobile case
- Calibrated M.S. or S.S Weight Sets - Refer Table 1 & 2
- Operating Fluid (500 ml)
- 'O' Ring & Seals
- Full set of Adaptors consisting of 1/8", 1/4", 3/8", 1/2" BSP (*Set of NPT Adaptors available on request*)
- Pointer Puller / Punch
- Set of Spanners & Screw Driver
- Wooden Carrying Case for Weight Sets
- Traceable Calibration Certificate
- Instruction Manual

#### **OPTIONAL (ADD-ON) ITEMS**

- Right angled Adaptor
- Two Gauge Adaptor
- Conversion Weight Sets to convert from one unit of Pressure to another
- Incremental Weight Sets for smaller increments of Pressure
- Calibration Certificates are issued in Accordance with our Scope as granted by NABL per ISO/IEC 17025:2017 Standards - Refer Table 1

## Technical Datasheet

### Dead Weight Testers

Hydraulic

H6000-P

Portable

Ideal for Fine Increments & for Medium Volume Calibration. Ensures – Easy & Controllable Pressure generation for Calibrating Pressure Gauges / Transducers / Transmitters, Transfer Standards, Recorders, Digital Calibrators etc.

Screw Pump with built-in Priming Pump

\* Typical Photo. Accessories shown above are not part of standard equipment

#### SALIENT FEATURES

Engineering Units : bar or Kg/Cm <sup>2</sup> or psi (Kpa & Mpa also available)
Spirit Level
Piston Calibrated thro' "Cross Floating Techniques"
Calibrated to Standard Gravity (Optional : Calibration to Local Gravity as per Customer's requirement)
Accuracies Traceable to International Standards
Non-Magnetic Stainless Steel Weight Sets
Fixed in a Sturdy Mobile Case for use in Field Calibration



#### SPECIFICATIONS

Ranges	35 / 70 / 100 / 160 / 350 / 600 / 700 bar	
Piston	Single / Dual	} Refer Table 2
Standard Accuracy	±0.05% of Reading	
Traceability	International Standards	} Refer Table 1
Weights	Non-Magnetic Stainless Steel	
Pressure generation	Thro' Priming Pump & Screw Ram	
Standard Corrections	Gravity : 9.80665 m/s <sup>2</sup> / Temperature : 23°C / Air Density : 1.2 Kg/Cm <sup>2</sup>	
Weight (approx.)	Instrument : 12 Kg. ; Weight Sets : 8 to 33 Kg.	Refer Table 2
No. of Weights	12 to 15	
Instrument Dimensions	440 x 350 x 200 mm (L x B x H)	
Operating Fluid	Oil	

Table 1

Models	Accuracy	PCU	Weight Set	Certification	Remarks
H6000-P	±0.05% of Reading	Tungsten Carbide Piston & Matching Cylinder	Non-Magnetic Stainless Steel	Overall Accuracy	Traceable Calibration Certificate

Table 2

Piston Type	Piston Model	Pressure Ranges		
		1 / Bar	2 / Kg/Cm <sup>2</sup>	3 / PSI
Single	SP-35	0.5 to 35	0.5 to 35	10 to 500
Single	SP-70	0.5 to 70	0.5 to 70	10 to 1000
Single	SP-100	5 to 100	5 to 100	75 to 1500
Single	SP-160	5 to 160	5 to 160	75 to 2500
Single	SP-350	5 to 350	5 to 350	75 to 5000
Single	SP-600	10 to 600	10 to 600	150 to 9000
Single	SP-700	10 to 700	10 to 700	150 to 10000
Dual	DP-160	1 to 160	1 to 160	15 to 2500
Dual	DP-350	1 to 350	1 to 350	15 to 5000
Dual	DP-600	1 to 600	1 to 600	15 to 9000
Dual	DP-700	1 to 700	1 to 700	15 to 10000

P.T.O.

#### **STANDARD INCLUSIONS**

- Basic Instrument in a sturdy mobile case
- Calibrated S.S Weight Sets - Refer Table 1 & 2
- Operating Fluid (500 ml)
- 'O' Ring & Seals
- Full set of Adaptors consisting of 1/8", 1/4", 3/8", 1/2" BSP (*Set of NPT Adaptors available on request*)
- Pointer Puller / Punch
- Set of Spanners & Screw Driver
- Wooden Carrying Case for Weight Sets
- Traceable Calibration Certificate
- Instruction Manual

#### **OPTIONAL (ADD-ON) ITEMS**

- Right angled Adaptor
- Two Gauge Adaptor
- Conversion Weight Sets to convert from one unit of Pressure to another
- Incremental Weight Sets for smaller increments of Pressure
- Calibration Certificates are issued in Accordance with our Scope as granted by NABL per ISO/IEC 17025:2017 Standards - Refer Table 1

## Technical Datasheet

### Dead Weight Testers

Hydraulic

H6600-P

Portable

Ideal for Fine Increments & for Medium Volume Calibration. Ensures – Easy & Controllable Pressure generation for Calibrating Pressure Gauges / Transducers / Transmitters, Transfer Standards, Recorders, Digital Calibrators etc.

Screw Pump with built-in Priming Pump

Typical Photo. Accessories shown are not part of standard equipment

#### SALIENT FEATURES

Engineering Units : bar or Kg/Cm<sup>2</sup> or psi (Kpa & Mpa also available)  
 Spirit Level  
 Piston Calibrated thro' "Cross Floating Techniques"  
 Calibrated to Standard Gravity  
 (Optional : Calibration to Local Gravity as per Customer's requirement)  
 Accuracies Traceable to International Standards  
 Non-Magnetic Stainless Steel Weight Sets  
 Fixed in a Sturdy Mobile Case for use in Field Calibration



#### SPECIFICATIONS

Ranges	35 / 70 / 100 / 160 / 350 / 600 / 700 bar	
Piston	Single / Dual	} Refer Table 2
Standard Accuracy	±0.025% of Reading	
Traceability	International Standards	} Refer Table 1
Weights	Non-Magnetic Stainless Steel	
Pressure generation	Thro' Priming Pump & Screw Ram	
Standard Corrections	Gravity : 9.80665 m/s <sup>2</sup> / Temperature : 23°C / Air Density : 1.2 Kg/Cm <sup>2</sup>	
Weight (approx.)	Instrument : 12 Kg. ; Weight Sets : 8 to 33 Kg.	Refer Table 2
No. of Weights	12 to 15	
Instrument Dimensions	440 x 350 x 200 mm (L x B x H)	
Operating Fluid	Oil	

Table 1

Models	Accuracy	PCU	Weight Set	Certification	Remarks
H6600-P	±0.025% of Reading	Tungsten Carbide Piston & Matching Cylinder	Non-Magnetic Stainless Steel	Overall Accuracy + PCU (Area) + Weights (Mass)	Issued by NABL ISO/IEC 17025:2017 Accredited Lab

Table 2

Piston Type	Piston Model	Pressure Ranges		
		1 / bar	2 / Kg/Cm <sup>2</sup>	3 / psi
Single	SP-35	0.5 to 35	0.5 to 35	10 to 500
Single	SP-70	0.5 to 70	0.5 to 70	10 to 1000
Single	SP-100	5 to 100	5 to 100	75 to 1500
Single	SP-160	5 to 160	5 to 160	75 to 2500
Single	SP-350	5 to 350	5 to 350	75 to 5000
Single	SP-600	10 to 600	10 to 600	150 to 9000
Single	SP-700	10 to 700	10 to 700	150 to 10000
Dual	DP-160	1 to 160	1 to 160	15 to 2500
Dual	DP-350	1 to 350	1 to 350	15 to 5000
Dual	DP-600	1 to 600	1 to 600	15 to 9000
Dual	DP-700	1 to 700	1 to 700	15 to 10000

P.T.O.



#### **STANDARD INCLUSIONS**

- Basic Instrument in a sturdy mobile case
- Calibrated S.S Weight Sets - Refer Table 1 & 2
- Operating Fluid (500 ml)
- 'O' Ring & Seals
- Full set of Adaptors consisting of 1/8", 1/4", 3/8", 1/2" BSP (*Set of NPT Adaptors available on request*)
- Pointer Puller / Punch
- Set of Spanners & Screw Driver
- Wooden Carrying Case for Weight Sets
- Calibration Certificates are issued in Accordance with our Scope as granted by NABL per ISO/IEC 17025:2017 Standards - Refer Table 1
- Instruction Manual

#### **OPTIONAL (ADD-ON) ITEMS**

- Right angled Adaptor
- Two Gauge Adaptor
- Conversion Weight Sets to convert from one unit of Pressure to another
- Incremental Weight Sets for smaller increments of Pressure

## Technical Datasheet

### Dead Weight Testers

Hydraulic

H6900-P

Portable

Ideal for Fine Increments & for Medium Volume Calibration. Ensures – Easy & Controllable Pressure generation for Calibrating Pressure Gauges / Transducers / Transmitters, Transfer Standards, Recorders, Digital Calibrators etc.

Screw Pump with built-in Priming Pump

Typical Photo. Accessories shown are not part of standard equipment

#### SALIENT FEATURES

Engineering Units : bar or Kg/Cm<sup>2</sup> or psi (Kpa & Mpa also available)  
 Spirit Level  
 Piston Calibrated thro' "Cross Floating Techniques"  
 Calibrated to Standard Gravity  
 (Optional : Calibration to Local Gravity as per Customer's requirement)  
 Accuracies Traceable to International Standards  
 Non-Magnetic Stainless Steel Weight Sets  
 Fixed in a Sturdy Mobile Case for use in Field Calibration



#### SPECIFICATIONS

Ranges	35 / 70 / 100 / 160 / 350 / 600 / 700 bar	
Piston	Single / Dual	} Refer Table 2
Standard Accuracy	±0.015% of Reading	
Traceability	International Standards	} Refer Table 1
Weights	Non-Magnetic Stainless Steel	
Pressure generation	Thro' Priming Pump & Screw Ram	
Standard Corrections	Gravity : 9.80665 m/s <sup>2</sup> / Temperature : 23°C / Air Density : 1.2 Kg/Cm <sup>2</sup>	
Weight (approx.)	Instrument : 12 Kg. ; Weight Sets : 8 to 33 Kg.	Refer Table 2
No. of Weights	12 to 15	
Instrument Dimensions	440 x 350 x 200 mm (L x B x H)	
Operating Fluid	Oil	

Table 1

Models	Accuracy	PCU	Weight Set	Certification	Remarks
H6900-P	±0.015% of Reading	Tungsten Carbide Piston & Matching Cylinder	Non-Magnetic Stainless Steel	Overall Accuracy + PCU (Area) + Weights (Mass)	Issued by NABL ISO/IEC 17025:2017 Accredited Calibration Lab

Table 2

Piston Type	Piston Model	Pressure Ranges		
		1 / bar	2 / Kg/Cm <sup>2</sup>	3 / psi
Single	SP-35	0.5 to 35	0.5 to 35	10 to 500
Single	SP-70	0.5 to 70	0.5 to 70	10 to 1000
Single	SP-100	5 to 100	5 to 100	75 to 1500
Single	SP-160	5 to 160	5 to 160	75 to 2500
Single	SP-350	5 to 350	5 to 350	75 to 5000
Single	SP-600	10 to 600	10 to 600	150 to 9000
Single	SP-700	10 to 700	10 to 700	150 to 10000
Dual	DP-160	1 to 160	1 to 160	15 to 2500
Dual	DP-350	1 to 350	1 to 350	15 to 5000
Dual	DP-600	1 to 600	1 to 600	15 to 9000
Dual	DP-700	1 to 700	1 to 700	15 to 10000

P.T.O.

#### **STANDARD INCLUSIONS**

- Basic Instrument in a sturdy mobile case
- Calibrated S.S Weight Sets - Refer Table 1 & 2
- Operating Fluid (500 ml)
- 'O' Ring & Seals
- Full set of Adaptors consisting of 1/8", 1/4", 3/8", 1/2" BSP (*Set of NPT Adaptors available on request*)
- Pointer Puller / Punch
- Set of Spanners & Screw Driver
- Wooden Carrying Case for Weight Sets
- Calibration Certificates are issued in Accordance with our Scope as granted by NABL per ISO/IEC 17025:2017 Standards - Refer Table 1
- Instruction Manual

#### **OPTIONAL (ADD-ON) ITEMS**

- Right angled Adaptor
- Two Gauge Adaptor
- Conversion Weight Sets to convert from one unit of Pressure to another
- Incremental Weight Sets for smaller increments of Pressure

## Technical Datasheet

### Dead Weight Testers

Pneumatic

P8000 / P8600

Bench-top / Table-top Model

Ideal tool for Fine Increments & for Medium Volume Applications. Ensures – easy & controllable Pressure generation for Calibration of Pneumatic Digital Indicators, Manometers, Pressure Transducers / Transmitters, Pneumatic Digital Calibrators / Pressure Gauges etc.

Screw Pump with built-in Priming Pump

#### SALIENT FEATURES

- Air / Gas operated
- Engineering Units : bar or Kg/Cm<sup>2</sup> or psi (Kpa & Mpa also available)
- Adjustable Foot & Spirit Level
- Piston Calibrated thro' "Cross Floating Techniques"
- Pressure generation direct via Priming Pump & Ram Screw
- Calibrated to Standard Gravity
- (Optional : Calibration to Local Gravity as per Customer's requirement)
- Non-Magnetic Stainless Steel Weight Sets
- Built-in / Integral (Priming) Pump. Maximum Pressure: 7 bar
- \* External Air supply required for Higher Pressures (Integrated with Pressure Gauge & Regulator)



#### SPECIFICATIONS

Ranges	0.5 to 1 / 2 / 10 / 20 / 35 bar *
Piston	Single
Standard Accuracy	±0.05% & ±0.025% of Reading
Traceability	International Standards
Pressure generation	Thro' Priming Pump & Screw Ram
Standard Corrections	Gravity : 9.80665 m/s <sup>2</sup> / Temperature : 23°C / Air Density : 1.2 Kg/Cm <sup>2</sup>
Weight (approx.)	Instrument : 19 Kg. ; Weight Sets : 30 Kg.
No. of Weights	12 to 13
Instrument Dimensions	530 x 500 x 230 mm (L x W x H)

Table 1

Models	Accuracy	PCU	Weight Set	Certification	Remarks
P8000 / P8600	±0.05% / ±0.025% of Reading	Hardened Special Steel Piston & Matching Cylinder	Non-Magnetic Stainless Steel	Overall Accuracy	Refer Table 2

Table 2

Models	Pressure Ranges			Remarks
	1 / bar	2 / Kg/Cm <sup>2</sup>	3 / psi	
P8000-SP	15 mBar to 1000 mBar (1 bar)	0.015 to 1	0.2 to 15	Traceable Calibration Certificate
P8000-SP	0.5 to 10 bar	0.5 to 10	10 to 150	Issued by NABL ISO/IEC 17025:2017 Accredited Lab
P8000-SP	0.5 to 20 bar	0.5 to 20	10 to 300	
P8000-SP	0.5 to 35 bar	0.5 to 35	10 to 500	

Models	Pressure Ranges			Remarks
	1 / bar	2 / Kg/Cm <sup>2</sup>	3 / psi	
P8600-SP	15 mBar to 1000 mBar (1 bar)	0.015 to 1	0.2 to 15	Traceable Calibration Certificate
P8600-SP	0.5 to 10 bar	0.5 to 10	10 to 150	Issued by NABL ISO/IEC 17025:2017 Accredited Lab
P8600-SP	0.5 to 20 bar	0.5 to 20	10 to 300	
P8600-SP	0.5 to 35 bar	0.5 to 35	10 to 500	

P.T.O.

**STANDARD INCLUSIONS**

- Basic Instrument
- Set of Adaptors (BSP or NPT)

<u>BSP</u>	<u>NPT</u>
1/8" BSP(F) X 1/2" BSP (M)	1/8" NPT(F) X 1/2" BSP (M)
1/2" BSP(F) X 1/2" BSP (M)	1/4" NPT(F) X 1/2" BSP (M)
3/8" BSP(F) X 1/2" BSP (M)	1/2" NPT(F) X 1/2" BSP (M)
	3/8" NPT(F) X 1/2" BSP (M)
- Non-Magnetic Stainless Steel Weight Sets
- Spirit Level, Dust Cover & Wooden Carrying Case (for Weight Sets)
- Pointer Puller / Punch,
- Set of Spanners & Screw Driver
- 'O' Ring & Seals
- Traceable Calibration Certificate (for P8000 Series)
- Calibration Certificates are issued in Accordance with our Scope as granted by NABL per ISO/IEC 17025:2017 Standards (for P8600 Series)
- Instruction Manual

**OPTIONAL (ADD-ON) ITEMS**

- Two Gauge Adaptor
- Right angled Adaptor
- Conversion Weight Sets to convert from one unit of Pressure to another
- Incremental Weight Sets for smaller increments of Pressure
- Calibration Certificates are issued in Accordance with our Scope as granted by NABL per ISO/IEC 17025:2017 Standards (for P8000 Series)

**По вопросам продаж и поддержки обращайтесь:**

Алматы (7273)495-231	Калининград (4012)72-03-81	Омск (3812)21-46-40	Сыктывкар (8212)25-95-17
Ангарск (3955)60-70-56	Калуга (4842)92-23-67	Орел (4862)44-53-42	Тамбов (4752)50-40-97
Архангельск (8182)63-90-72	Кемерово (3842)65-04-62	Оренбург (3532)37-68-04	Тверь (4822)63-31-35
Астрахань (8512)99-46-04	Киров (8332)68-02-04	Пенза (8412)22-31-16	Тольятти (8482)63-91-07
Барнаул (3852)73-04-60	Коломна (4966)23-41-49	Петрозаводск (8142)55-98-37	Томск (3822)98-41-53
Белгород (4722)40-23-64	Кострома (4942)77-07-48	Псков (8112)59-10-37	Тула (4872)33-79-87
Благовещенск (4162)22-76-07	Краснодар (861)203-40-90	Пермь (342)205-81-47	Тюмень (3452)66-21-18
Брянск (4832)59-03-52	Красноярск (391)204-63-61	Ростов-на-Дону (863)308-18-15	Ульяновск (8422)24-23-59
Владивосток (423)249-28-31	Курск (4712)77-13-04	Рязань (4912)46-61-64	Улан-Удэ (3012)59-97-51
Владикавказ (8672)28-90-48	Курган (3522)50-90-47	Самара (846)206-03-16	Уфа (347)229-48-12
Владимир (4922)49-43-18	Липецк (4742)52-20-81	Саранск (8342)22-96-24	Хабаровск (4212)92-98-04
Волгоград (844)278-03-48	Магнитогорск (3519)55-03-13	Санкт-Петербург (812)309-46-40	Чебоксары (8352)28-53-07
Вологда (8172)26-41-59	Москва (495)268-04-70	Саратов (845)249-38-78	Челябинск (351)202-03-61
Воронеж (473)204-51-73	Мурманск (8152)59-64-93	Севастополь (8692)22-31-93	Череповец (8202)49-02-64
Екатеринбург (343)384-55-89	Набережные Челны (8552)20-53-41	Симферополь (3652)67-13-56	Чита (3022)38-34-83
Иваново (4932)77-34-06	Нижний Новгород (831)429-08-12	Смоленск (4812)29-41-54	Якутск (4112)23-90-97
Ижевск (3412)26-03-58	Новокузнецк (3843)20-46-81	Сочи (862)225-72-31	Ярославль (4852)69-52-93
Иркутск (395)279-98-46	Ноябрьск (3496)41-32-12	Ставрополь (8652)20-65-13	
Казань (843)206-01-48	Новосибирск (383)227-86-73	Сургут (3462)77-98-35	
Россия +7(495)268-04-70	Киргизия +996(312)-96-26-47	Казахстан +7(7172)727-132	